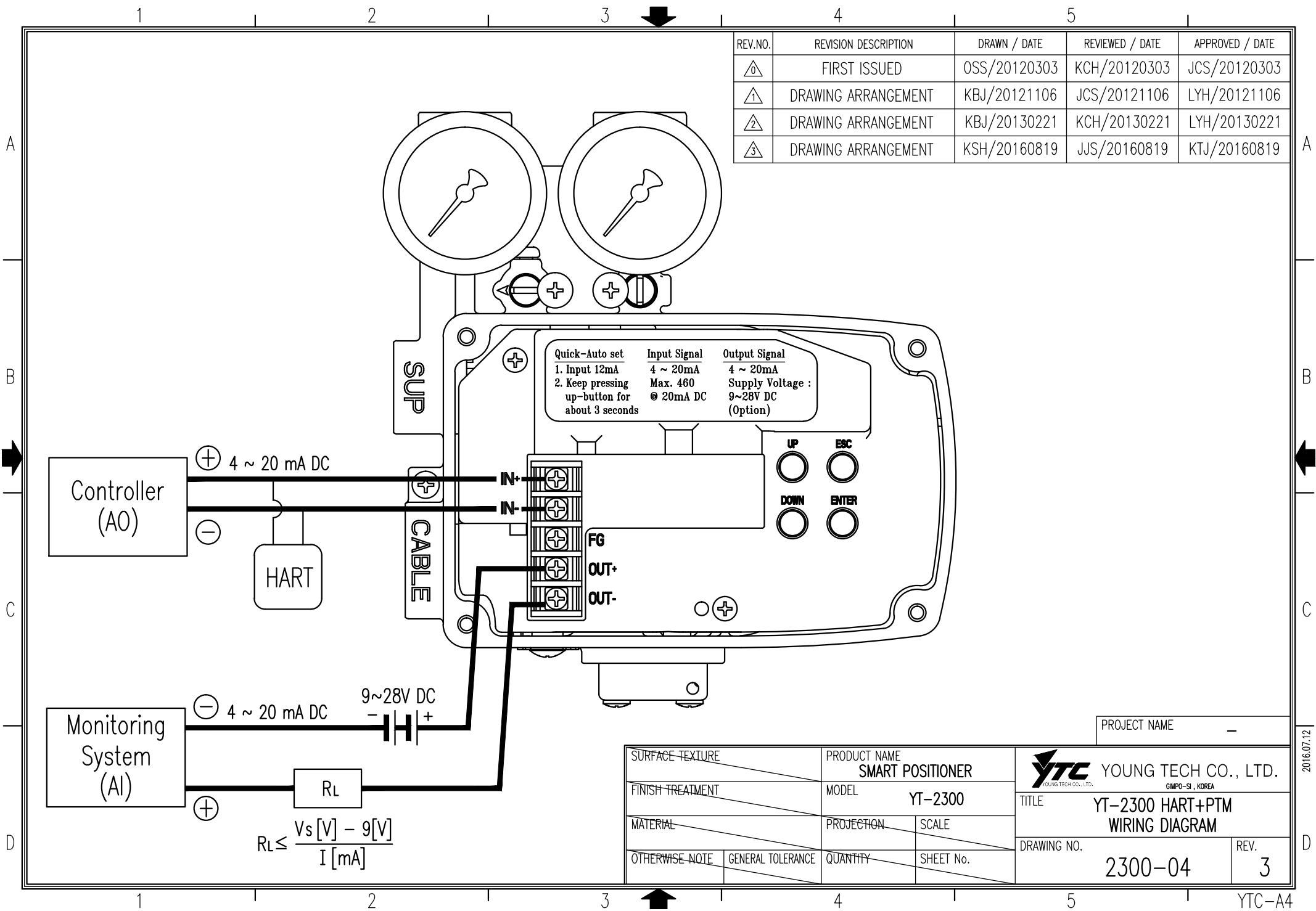


| REV.NO. | REVISION DESCRIPTION | DRAWN / DATE | REVIEWED / DATE | APPROVED / DATE |
|---------|----------------------|--------------|-----------------|-----------------|
| △0 | FIRST ISSUED | OSS/20120303 | KCH/20120303 | JCS/20120303 |
| △1 | DRAWING ARRANGEMENT | KBJ/20121106 | JCS/20121106 | LYH/20121106 |
| △2 | DRAWING ARRANGEMENT | KBJ/20130221 | KCH/20130221 | LYH/20130221 |
| △3 | DRAWING ARRANGEMENT | KSH/20160819 | JJS/20160819 | KTJ/20160819 |



| | | | |
|------------------|----------------------------------|-------------------|-----------|
| SURFACE TEXTURE | PRODUCT NAME SMART POSITIONER | PROJECTION | SCALE |
| FINISH TREATMENT | MODEL YT-2300 | QUANTITY | SHEET No. |
| MATERIAL | OTHERWISE NOTE | GENERAL TOLERANCE | |

| | | | |
|--|--|---|--|
| PROJECT NAME | | - | |
| YOUNG TECH CO., LTD. <small>GIMPO-SI, KOREA</small> | | TITLE YT-2300 HART+PTM WIRING DIAGRAM | |
| DRAWING NO. 2300-04 | | REV. 3 | |

2016.07.12