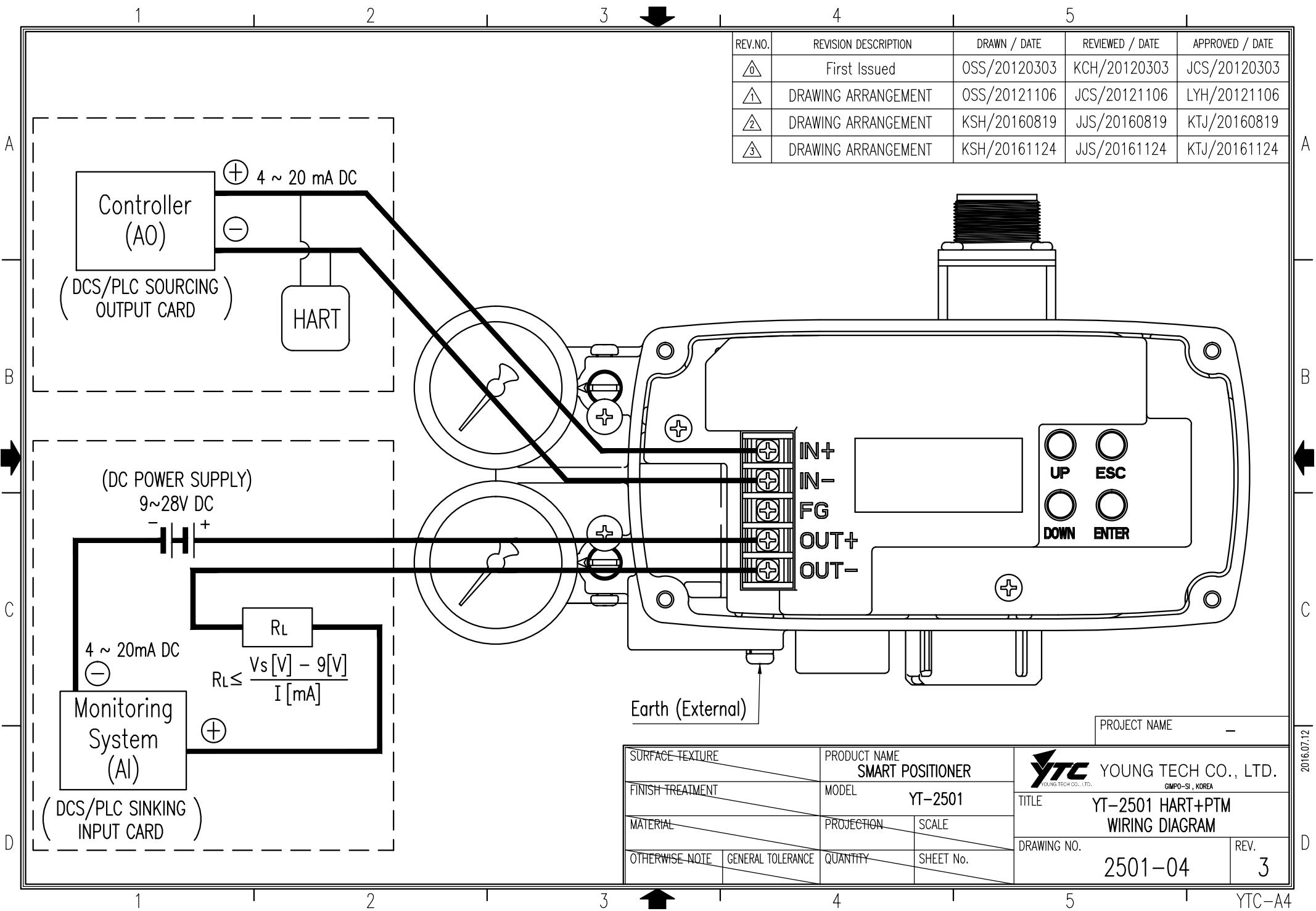


| REV.NO. | REVISION DESCRIPTION | DRAWN / DATE | REVIEWED / DATE | APPROVED / DATE |
|---------|----------------------|--------------|-----------------|-----------------|
| △0 | First Issued | OSS/20120303 | KCH/20120303 | JCS/20120303 |
| △1 | DRAWING ARRANGEMENT | OSS/20121106 | JCS/20121106 | LYH/20121106 |
| △2 | DRAWING ARRANGEMENT | KSH/20160819 | JJS/20160819 | KTJ/20160819 |
| △3 | DRAWING ARRANGEMENT | KSH/20161124 | JJS/20161124 | KTJ/20161124 |



| | | | | | |
|------------------|-------------------|---|-----------|---|------------------|
| SURFACE TEXTURE | | PRODUCT NAME SMART POSITIONER | | YOUNG TECH CO., LTD. <small>GIMPO-SI, KOREA</small> | |
| FINISH TREATMENT | | MODEL YT-2501 | | | |
| MATERIAL | | PROJECTION | SCALE | TITLE YT-2501 HART+PTM WIRING DIAGRAM | |
| OTHERWISE NOTE | GENERAL TOLERANCE | QUANTITY | SHEET No. | DRAWING NO. 2501-04 | REV. 3 |

2016.07.12