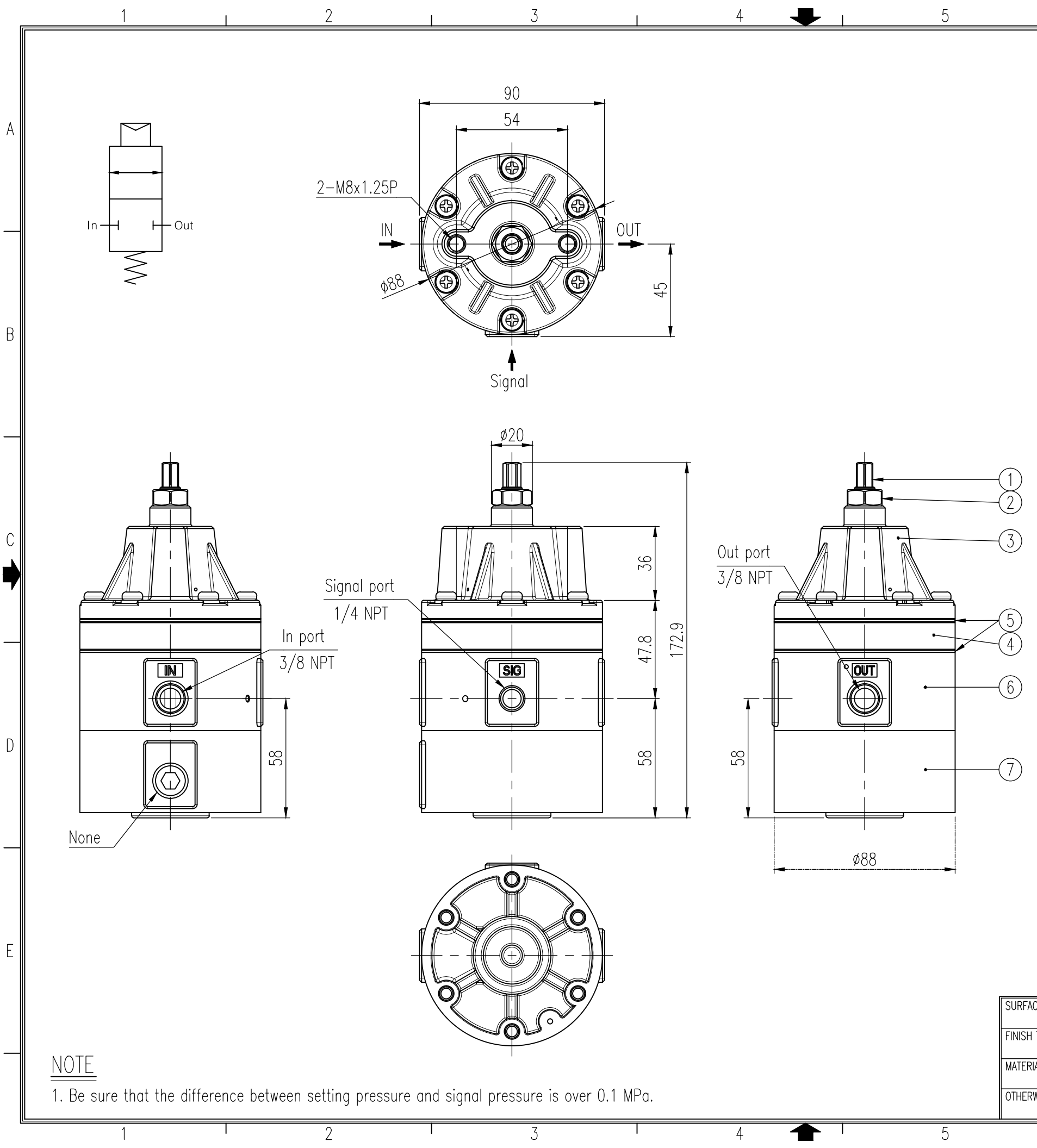


REV.NO.	REVISION DESCRIPTION	DRAWN / DATE	REVIEWED / DATE	APPROVED / DATE
△1	First issued	MDK/20120128	JCS/20120128	LYH/20120128
	Omission in the middle			
△2	Drawing arrangement	KSH/20190510	KCH/20190510	KTJ/20190510
△3	Drawing arrangement	OSS/20190926	KCH/20190926	KTJ/20190926



Specifications

Item. type	YT-430 Single type	
Max. supply pressure	Max. 1 MPa (10 bar)	
Signal pressure setting range	0.14 ~ 0.7 MPa (1.4 ~ 7 bar)	
Hysteresis	Below 0.01 MPa (0.1 bar)	
Flow capacity(Cv)	1.8	
Ambient temperature	Standard	$\square -20 \sim 70 \text{ }^\circ\text{C} (-4 \sim 158 \text{ }^\circ\text{F})$
	High	$\square -20 \sim 120 \text{ }^\circ\text{C} (-4 \sim 248 \text{ }^\circ\text{F})$
	Low	$\square -40 \sim 70 \text{ }^\circ\text{C} (-40 \sim 158 \text{ }^\circ\text{F})$
	Arctic	$\square -50 \sim 70 \text{ }^\circ\text{C} (-58 \sim 158 \text{ }^\circ\text{F})$
Input / Output connection	3/8 NPT	
Signal connection	1/4 NPT	
Housing material	Aluminum	
Weight	1.5kg (3.3lb)	

No.	Part name	Material	Q'ty	Remark
1	Adjust shaft	STS303	1	
2	Nut (M10x1.0P)	STS304	1	
3	Base cover	ALDC12	1	
4	Exhaust ring	ALDC12	1	
5	Diaphragm	NBR	2	Standard
		Silicone	2	Low/High/Arctic temp.
6	Base body-1	ALDC12	1	
7	Low body-1	ALDC12	1	

NOTE

1. Be sure that the difference between setting pressure and signal pressure is over 0.1 MPa.

SURFACE TEXTURE		PRODUCT NAME Lock up valve		PROJECT NAME	
FINISH TREATMENT		MODEL YT-430S		rotork Rotork YTC Limited GMP0-SI, KOREA	
MATERIAL		PROJECTION 3rd	SCALE 1 / 2	TITLE Single standard type drawing	
OTHERWISE NOTE	GENERAL TOLERANCE	QUANTITY 1	SHEET No. 1 / 1	DRAWING NO. YT-430S-1	REV. 4