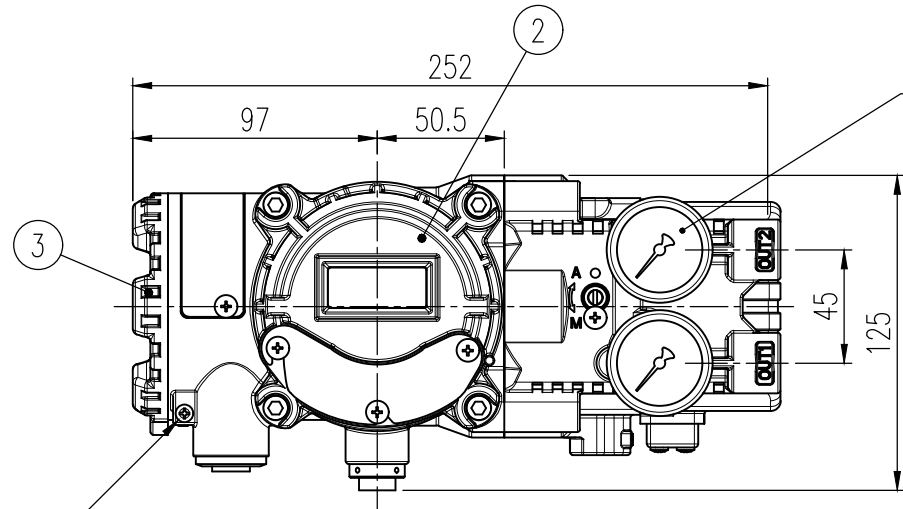


| REV.NO. | REVISION DESCRIPTION | DRAWN / DATE | REVIEWED / DATE | APPROVED / DATE |
|---------|--------------------------|--------------|-----------------|-----------------|
| △ | Issue for approval | KCH/20141028 | JCS/20141028 | LYH/20141028 |
| △ | Company name changed ... | OSS/20191014 | KCH/20191014 | KTJ/20191014 |



This pressure gauge will be replaced with a plug for single acting type.

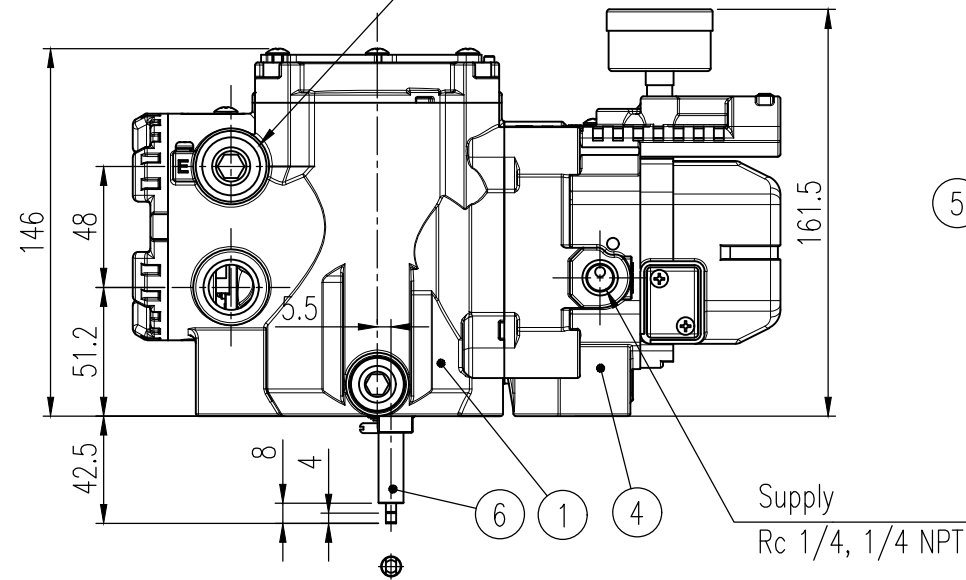
| Feedback connection type | | |
|---------------------------------|---------------------------------|--------------------------------|
| Fork lever type | | |
| <input type="checkbox"/> M6x34L | <input type="checkbox"/> M6x63L | <input type="checkbox"/> NAMUR |
| <input type="checkbox"/> M8x34L | <input type="checkbox"/> M8x34L | |

Earth (External, Internal)

1. Minimum Size Wire 1mm or 18AWG.
2. M4*5 0.7P Round Head Screw
3. M4 Spring washer

2-Conduit entry, G 1/2

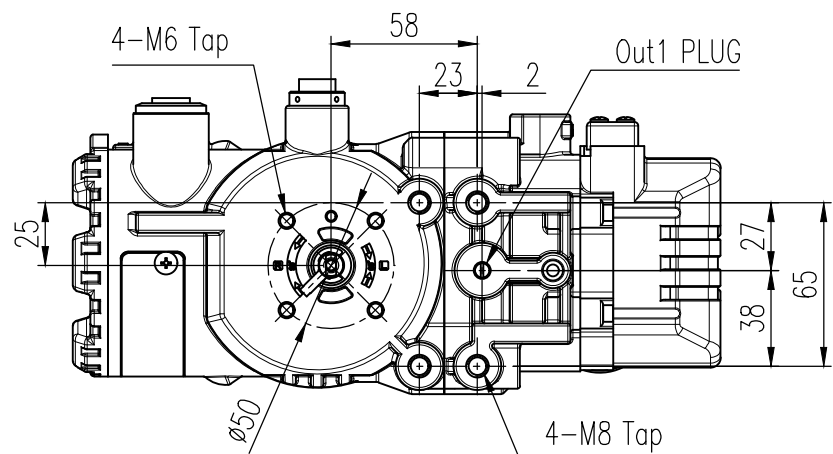
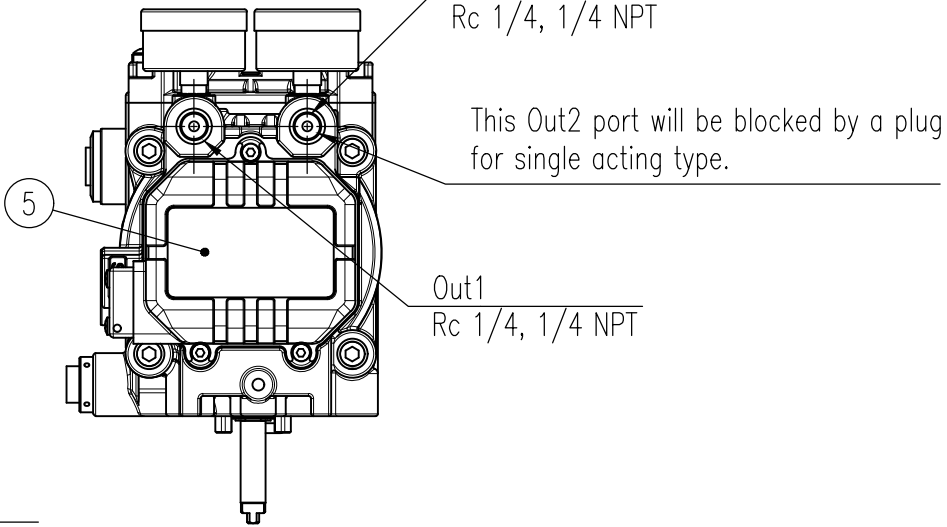
During connecting cable or conduits, it is necessary to follow flame-proof certified procedure or flame-proof certified cable gland or flexible coupling.



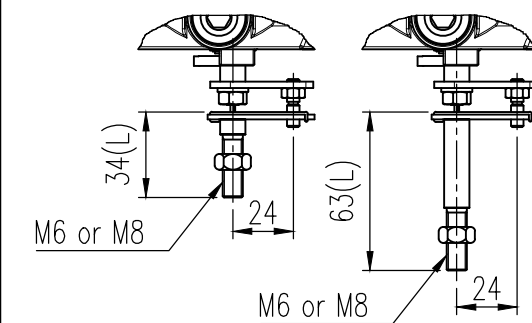
Out2
Rc 1/4, 1/4 NPT

This Out2 port will be blocked by a plug for single acting type.

Out1
Rc 1/4, 1/4 NPT



Fork lever type



Specifications

| | | |
|---|---|---|
| Acting Type | <input type="checkbox"/> Single | <input type="checkbox"/> Double |
| Input Signal | 4 ~ 20mA DC | |
| Impedance | Max. 450 Ohm/20mA DC | |
| Supply Pressure | 0.14 ~ 0.7MPa (1.4 ~ 7bar) | |
| Explosion Proof | Ex d IIC T5/T6 | |
| Stroke | 55 ~ 110° | |
| Operating Temp. | <input type="checkbox"/> -30 ~ 85°C (-22 ~ 185°F) | |
| | <input type="checkbox"/> -40 ~ 85°C (-40 ~ 185°F) | |
| Explosion Proof Ambient Temp. | ATEX, IECEx | T6 : -40 ~ 70°C (-40 ~ 158°F) |
| | FM, INMETRO | T5 : -40 ~ 80°C (-40 ~ 176°F) |
| | KCs | T6 : -40 ~ 70°C (-40 ~ 158°F) |
| | | T5 : -40 ~ 85°C (-40 ~ 185°F) |
| Linearity | ±0.5% F.S. | |
| Hysteresis | ±0.5% F.S. | |
| Sensitivity | ±0.2% F.S. | |
| Repeatability | ±0.3% F.S. | |
| Conduit entry, Air Connection, Gauge Connection | G 1/2, | G 1/2, |
| | <input type="checkbox"/> Rc 1/4, Rc 1/8 | <input type="checkbox"/> 1/4 NPT, 1/8 NPT |
| Air consumption | Below 2LPM (Sup.=0.14MPa, 1.4bar) | |
| Flow Capacity | 70LPM (Sup.=0.14MPa, 1.4bar) | |
| Protection | IP66 | |
| Main Board | MPU | 16 bit Micro Controller |
| | A/D Converter | 12 bit |
| | D/A Converter | 12 bit |
| Output Characteristics | <input type="checkbox"/> Linear | <input type="checkbox"/> Quick open |
| | <input type="checkbox"/> EQ% | <input type="checkbox"/> User set (5 or 18 point) |
| Housing Material | Aluminum | |
| Weight | 3.56kg (7.9 lb) | |

| No. | Part name | Material | Q'ty | Remark |
|-----|----------------|----------|------|--------|
| 6 | Main shaft-R | STS303 | 1 | Namur |
| 5 | Pilot cover | ALDC12 | 1 | |
| 4 | Manifold | ALDC12 | 1 | |
| 3 | Terminal cover | ALDC12 | 1 | |
| 2 | Base cover | ALDC12 | 1 | |
| 1 | Base body | ALDC12 | 1 | |

| | | | | | |
|------------------|--|-------------------|----------|-------------------------|------|
| SURFACE TEXTURE | | PRODUCT NAME | | PROJECT NAME | |
| - | | Smart positioner | | - | |
| FINISH TREATMENT | | MODEL | | TITLE | |
| - | | YT-3410 | | Rotary standard drawing | |
| MATERIAL | | PROJECTION | SCALE | DRAWING NO. | |
| - | | 3rd | 1 / 3 | YT-3410-02 | |
| OTHERWISE NOTE | | GENERAL TOLERANCE | QUANTITY | SHEET No. | REV. |
| - | | - | 1 | 1 / 1 | 1 |