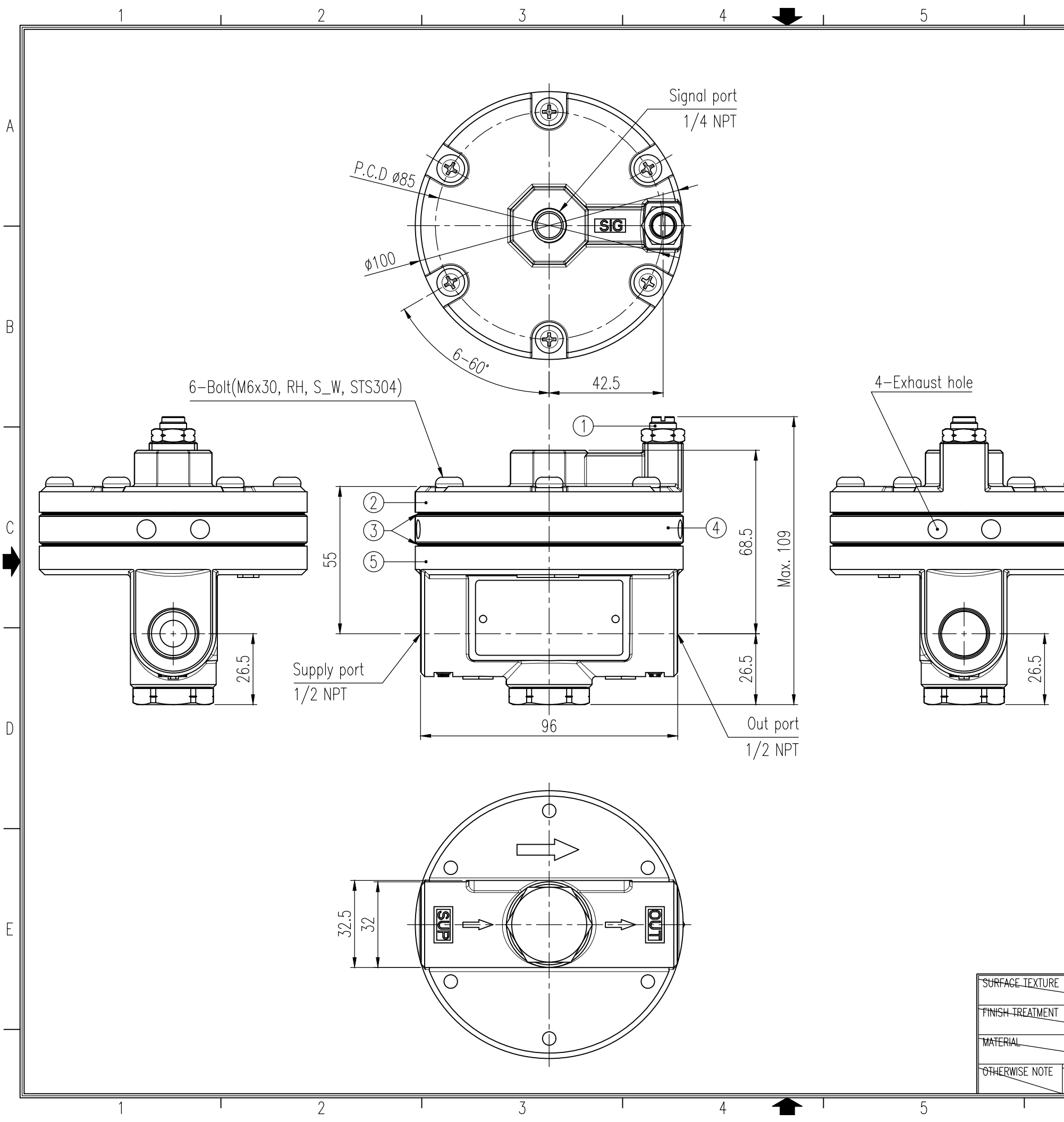


REV.NO.	REVISION DESCRIPTION	DRAWN / DATE	REVIEWED / DATE	APPROVED / DATE
△1	First issued	HSS/20100224	JCS/20100224	LYH/20100224
	Omission in the middle			
△2	Drawing Arrangement	KSH/20170612	JCS/20170612	KTJ/20170612
△3	Company name changed ...	KSH/20190924	KCH/20190924	KTJ/20190924



Specification

Item	Description	
Max. supply pressure	1 MPa (10 bar)	
Max. Signal/Output Pressure	0.7 MPa (7 bar)	
Signal/Output Pressure Ratio	1 : 1	
Flow Capacity(Cv)	Exhaust	2.08
	Output	2.72
Supply/Output Connection,	1/2 NPT	
Signal Connection	1/4 NPT	
Linearity	±1% (F.S.)	
Ambient Temperature	Standard	<input type="checkbox"/> 1 : -20 ~ 70 °C (-4 ~ 158 °F)
	High	<input type="checkbox"/> 2 : -20 ~ 120 °C (-4 ~ 248 °F)
	Low	<input type="checkbox"/> 3 : -40 ~ 70 °C (-40 ~ 158 °F)
	Arctic	<input type="checkbox"/> A : -50 ~ 70 °C (-58 ~ 158 °F)
Housing Material	Stainless Steel 316	
Weight	1.9kg (4.2lb)	

No.	Part name	Material	Q'ty	Remark
1	Adjust bolt	STS316	1	
2	Base cover	STS316	1	
3	Diaphragm	NBR	2	Standard
		Silicone	2	High/Low/Arctic Temp.
4	Exhaust ring	STS316	1	
5	Base body	STS316	1	

SURFACE TEXTURE		PRODUCT NAME Volume booster		PROJECT NAME	
FINISH TREATMENT		MODEL YT-325		rotork Rotork YTC Limited GIMPO-SI, KOREA	
MATERIAL		PROJECTION 3rd	SCALE 1 / 1.5	TITLE Standard drawing	
OTHERWISE NOTE		QUANTITY 1	SHEET No. 1 / 1	DRAWING NO. YT-325-01	REV. 6
GENERAL TOLERANCE		Rotork YTC-A3			

2019.01.23